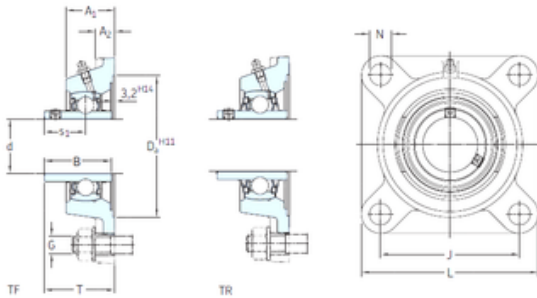




# SKF BEARING LTD

## SKF FY 1.3/4 FM bearing units

Bearing No. FY 1.3/4 FM



FY 1.3/4 FM Bearing 2D drawings and 3D CAD models

Bore Diameter	44,45 mm
d	44,45 mm
s1	32,7 mm
A1	39 mm
B1	43,7 mm
G	14 mm
J	105 mm
L	137 mm
T	56,5 mm
A2	14 mm
Weight	2,15 Kg
Basic dynamic load rating (C)	33,2 kN
Basic static load rating (C0)	21,6 kN
Fatigue load limit (Pu)	0,915
Category	Flange Block Bearings
Inventory	0.0
Manufacturer Name	SKF
Minimum Buy Quantity	N/A
Weight / Kilogram	2.15
EAN	7316576613685
Product Group	M06110
Number of Mounting Holes	4
Mounting Method	Eccentric Collar
Housing Style	4 Bolt Square Flange Block
Rolling Element	Ball Bearing
Housing Material	Cast Iron



## SKF BEARING LTD

Expansion / Non-expansion	Non-expansion
Mounting Bolts	9/16 Inch
Relubricatable	Yes
Insert Part Number	YET 209-112
Seals	M Seal
Housing Configuration	1 Piece Solid
Pilot Configuration	No Pilot
Inch - Metric	Inch
Long Description	4 Bolt Square Flange Block; 1-3/4" Bore; 5.8" Bolt Circle; 4-1/8" Bolt Spacing; 1 Piece Solid; Eccentric Collar Mount; Cast Iron; Ball Bearing; 1-23/32" Length Thru Bore; Relubrica
Other Features	Single Row   Standard Duty   Narrow Inner Race   Open End   Y Bearing
Category	Flange Block
UNSPSC	31171501
Harmonized Tariff Code	8483.20.40.40
Noun	Bearing
Keyword String	Flanged
Manufacturer URL	<a href="http://www.skf.com">http://www.skf.com</a>
Manufacturer Item Number	FY 1.3/4 FM
Weight / LBS	4.74
Nominal Bolt Circle Diameter Round	5.8 Inch   148 Millimeter
Cartridge Pilot Depth	0 Inch   0 Millimeter
Bolt Spacing	4.125 Inch   104.78 Millimeter
Length Thru Bore	1.719 Inch   43.663 Millimeter
Bore	1.75 Inch   44.45 Millimeter
Cartridge Pilot Diameter	0 Inch   0 Millimeter



## SKF BEARING LTD

Housing material	Cast iron
$D_a$	119.1 mm
$D_{b1}$	102 mm
$D_{b2}$	112 mm
A	39 mm
$A_1$	14 mm
$A_3$	3.2 mm
$A_5$	26.5 mm
$B_1$	43.7 mm
N	16 mm
$s_1$	32.7 mm
$R_G$	1/4-28 UNF
$R_1$	24.5 mm
$D_N$	6.5 mm
$SW_N$	7 mm
$G_N$	1/4-28 SAE-LT
$J_6$	123 mm
$J_7$	33.5 mm
$N_4$	4 mm
Basic dynamic load rating C	33.2 kN
Basic static load rating $C_0$	21.6 kN
Fatigue load limit $P_u$	0.915 kN
Limiting speed	4300 r/min
Mass bearing unit	2 kg
Thread grub screw $G_2$	3/8-24 UNF
Hexagonal key size for grub screw N	4.763 mm
Recommended tightening torque for grub screw	16.5 N · m
Recommended diameter for attachment bolts, mm G	14 mm
Recommended diameter for attachment bolts, inch G	0.5625 in